

JUAN DURÁN
ALBUM PARA ORQUESTA
-Piezas fáciles para orquesta de cámara-
Premio de la Universidad Carlos III de Madrid, 2001

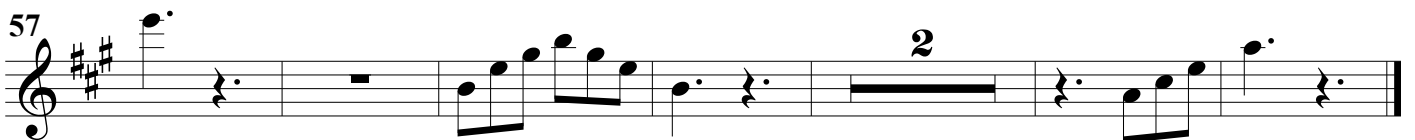
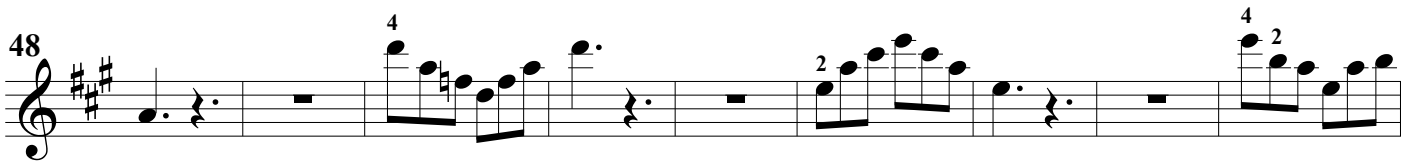
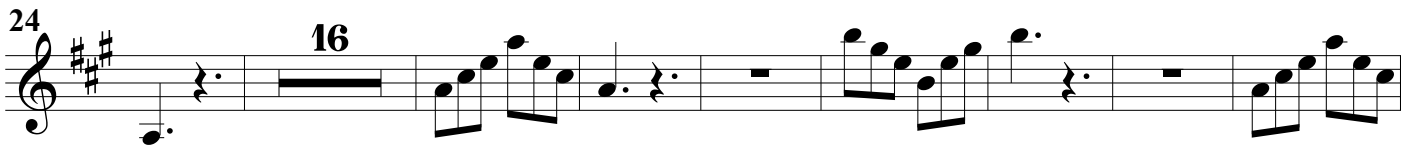
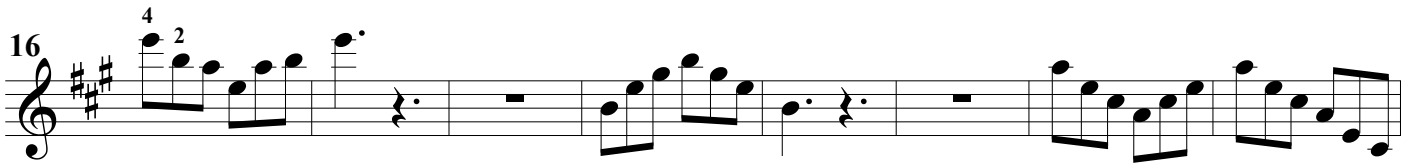
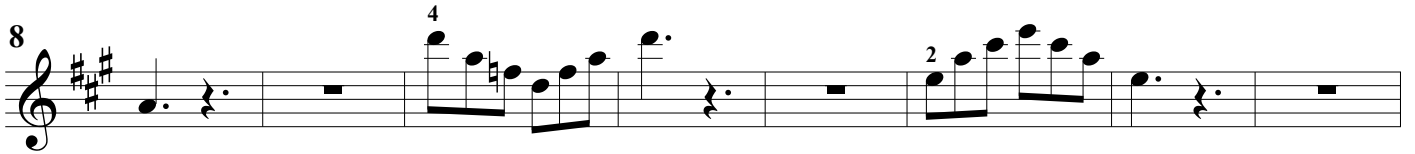
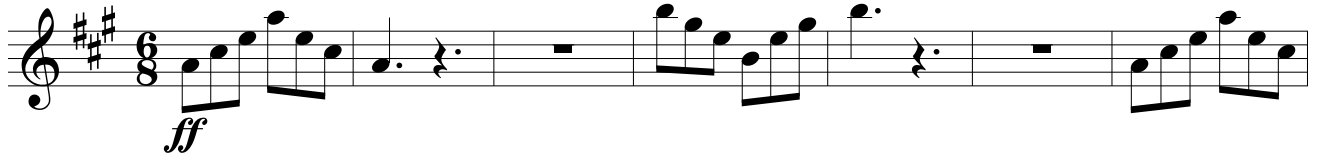
VIOLINES PRIMEROS



Editada en 2001 por Real Musical, Madrid

1. Marcha

♩.=120



2. Pastoral

$\text{♩} = 88$

6 *f* *p* 6 1

17 *p* *f*

22 *ff*

3. Danza

$\text{♩} = 66$

ff *energico* *simile* *p* 2

7

16 *p* Solo

21

27 *ff* *energico* *simile*

4. Coral

$\text{♩} = 100$

p

8

Sul D

13

3 3

8

Sul D

26

2 2 3 3

rit...

5. Pájaros y elefantes

$\text{♩} = 126$

mf *staccatissimo*

2

4

2

4

2

4

2

4

mf

4

5

6. Canción

$\text{♩} = 76$
Cantabile

p dolce *mf*

7 *p*

17 *mf*

7. Rondó

$\text{♩} = 88$
Pizz

p *sfz*

9 *f* *p* *sfz*

19 *sfz* *mf*

28 *p* *sfz*

8. Juguetes

El muñeco mecánico, el reloj de cuco, el tío-vivo y el tren eléctrico

$\text{♩} = 112$

Pizz

p *f* *p*

9

16 *f* Arco *mf*

23 *mf*

32 *mf*

38 Pizz *p* *f* 8 Arco *ff*

Musical score for '8. Juguetes' in G major, 2/4 time. The piece is marked with a tempo of 112. It consists of five staves of music. The first staff (measures 1-15) features a pizzicato texture with dynamics ranging from piano (p) to forte (f). A 9-measure rest is present. The second staff (measures 16-22) begins with a forte (f) dynamic and transitions to arco (mf) for a melodic line. The third staff (measures 23-31) continues the arco melody with various articulations and dynamics, including mf. The fourth staff (measures 32-37) continues the arco melody. The fifth staff (measures 38-45) returns to pizzicato, starting with piano (p) and reaching fortissimo (ff) before ending with an arco flourish.

9. Nana

$\text{♩} = 44$

Con sord

pp

13 rit...

Musical score for '9. Nana' in G major, 2/4 time. The piece is marked with a tempo of 44. It consists of two staves of music. The first staff (measures 1-12) is marked 'Con sord' and starts with pianissimo (pp). The second staff (measures 13-18) continues the melody and ends with a 'rit...' marking and a fermata.

10. Vals

♩.=58

Musical score for '10. Vals' in 3/4 time. The score consists of four staves of music. The first staff begins with a treble clef, a key signature of one sharp (F#), and a tempo marking of ♩.=58. The music starts with a half rest followed by a series of eighth notes with slurs and accents. The dynamic marking *mf* is placed below the first staff. The second staff starts at measure 6 and includes fingerings (2, 1, 1, 3, 1, 1) and a *cresc* marking. It features a dynamic shift to *f* and a *V* marking. The third staff starts at measure 12 and includes a *p* marking and *V* markings. The fourth staff starts at measure 18 and includes a *mf* marking. The fifth staff starts at measure 23 and includes a *cresc* marking, fingerings (2, 1, 1, 3, 4), and a *f* marking. The piece concludes with a *rit...* marking and a final note.

11. Minuetto

♩.=52

Musical score for '11. Minuetto' in 3/4 time. The score consists of five staves of music. The first staff begins with a treble clef, a key signature of one sharp (F#), and a tempo marking of ♩.=52. The music starts with a half rest followed by a series of quarter notes with slurs and accents. The dynamic marking *mf* is placed below the first staff. The second staff starts at measure 8 and includes a *V* marking. The third staff starts at measure 17 and includes a *3* (triple), *Pizz* (pizzicato), a *2* (double), and *Arco* (arco) marking. The dynamic marking *mf* is placed below the third staff. The fourth staff starts at measure 28 and includes a *V* marking. The fifth staff starts at measure 37 and includes a *V* marking and a *f* marking. The piece concludes with a final note.

12. Romanza

$\text{♩} = 88$ Sul D

p

10 *p* *cresc* *f* *dim*

20 *ff* *simile* *p* Sul D

30 *p*

40 *cresc* *f* *dim* *rit...*

13. Movimiento perpetuo

$\text{♩} = 126$

15 1. 2. 7 Pizz

mf

mf

sfz